



CX418

Logistics Thermal Label Printer

User Guide





Wram Tips

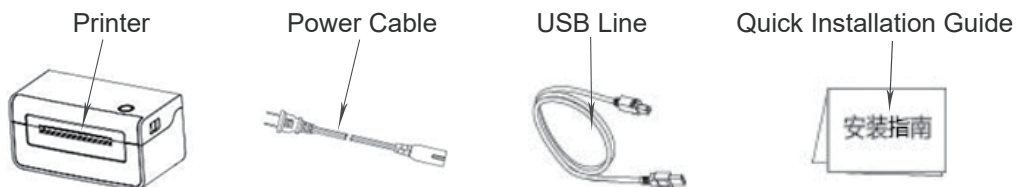
Our new item CX418 with fashionable shape and best quality , can work with any thermal direct label including express waybill , logistics labels, commodity price tags, and various sizes of barcode labels and so on. Help save time and money on label costs. For the convenience of using the corner printer, please read the following user guide carefully. If operated with an incorrect way may result in damage to your printer or injury.



Product introduction

 **COMER / CX418**

1 Package contents Standard Accessories

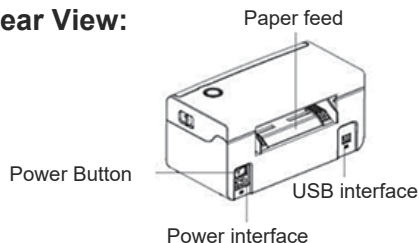


2 Appearance and Components

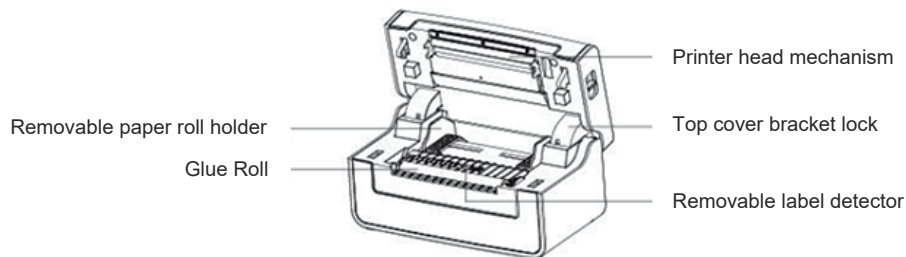
Front View:



Rear View:



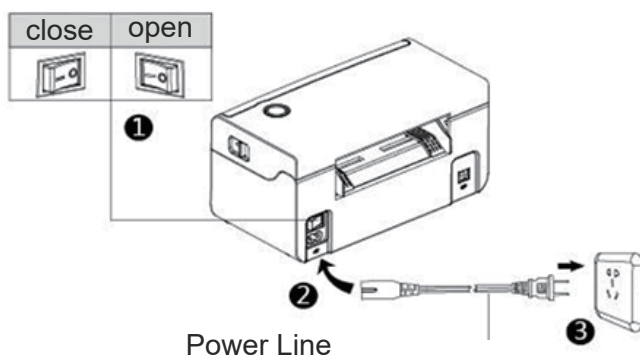
Inner View:



Quick Printer Installation

 **COMER / CX418**

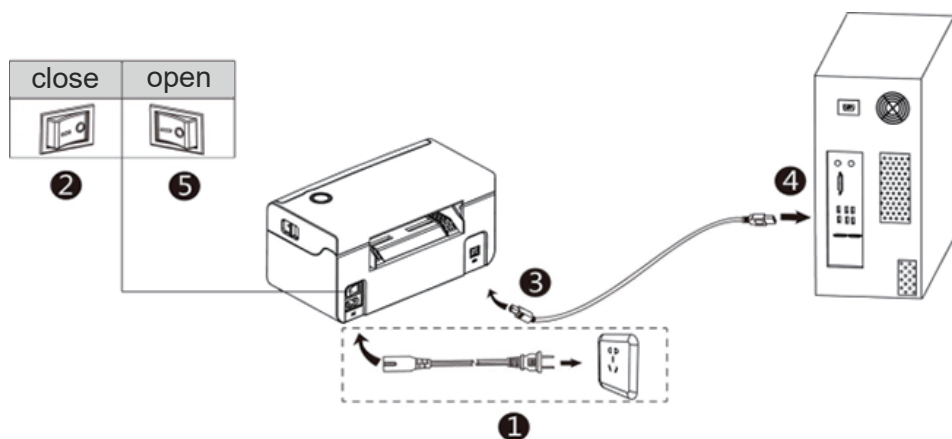
1



Cable Connection

1. Confirm the printer is Power-off (0);
2. Connect the power line to the printer;
3. Connect the other end of Power line to the socket;

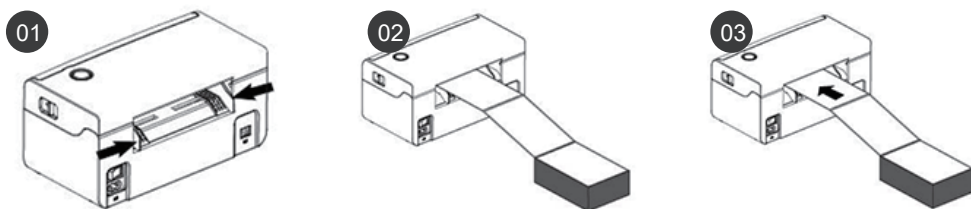
2



USB Connection

1. Confirm the printer is Power-off (0);
2. Connet the USB B-Type line to the printer;
3. Connect the other end of the USB B-Type line to the pc mainframe;
3. Turn on the printer power to be Power- on (I);

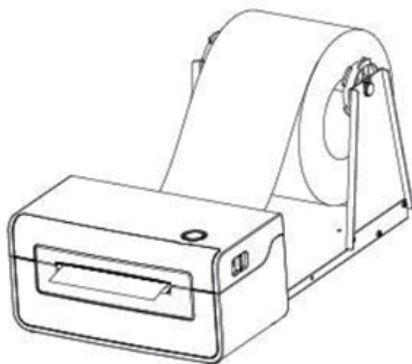
3



Consumables Installation

1. Face the back of the printer, hole down the paper guide with both hands to adjust the guide space according to the paper size;
2. Insert the thermal paper into the paper guide;
3. Feed the thermal label into the paper channel slowly, and the paper will automatically absorbed by detector;

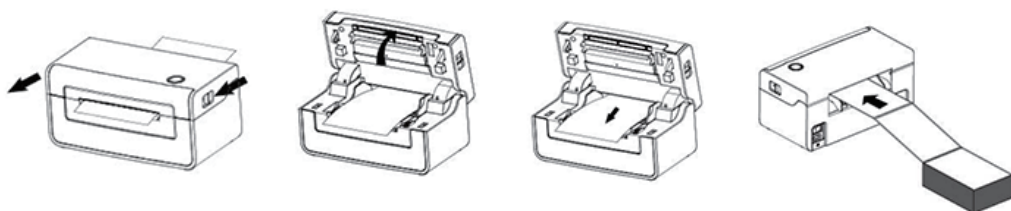
4



Outside-scroll Installation

1. Make sure the thermal label paper is in place, the machine can automatically absorb the paper into a small part;
2. The hook of the external paper roll holder needs to be aligned with the hook of the bottom of the printer;





Paper Jam

1. Facing the front of the printer, move the opening button forward with both hands at the same time to open the top cover;
2. Lift the top cover upwards;
3. After pulling the jammed paper out of the paper path, replace it with new paper and discard the wrinkled paper;
4. After the jammed paper is pulled out, normal media installation can be performed;

Driver Installation & Print Test

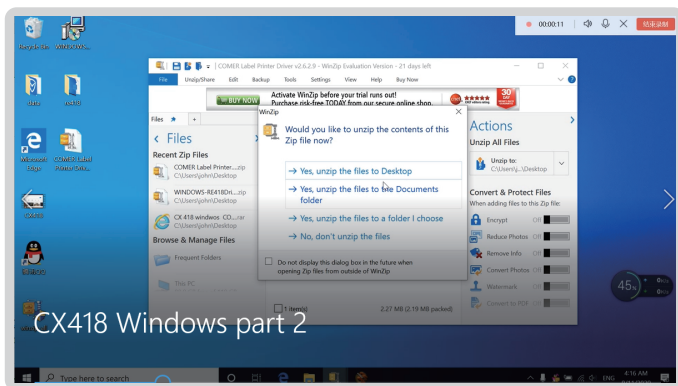


Pls download the driver from our website:<http://printer.kaaimai.com>

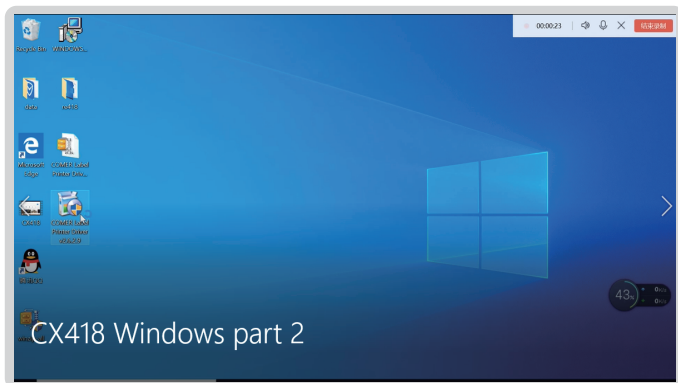


1. Please ensure the printer ON, download the Windows driver and run the downloaded software, prompt to complete.

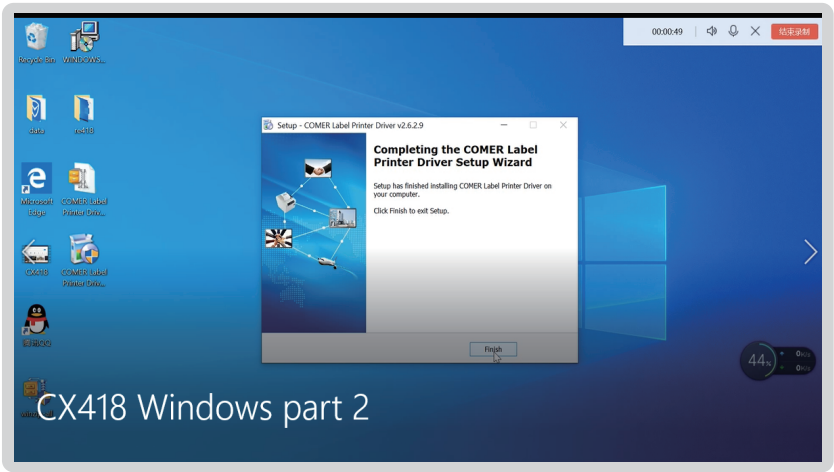
Use unzip tool to unzip the driver (As the pic shows)



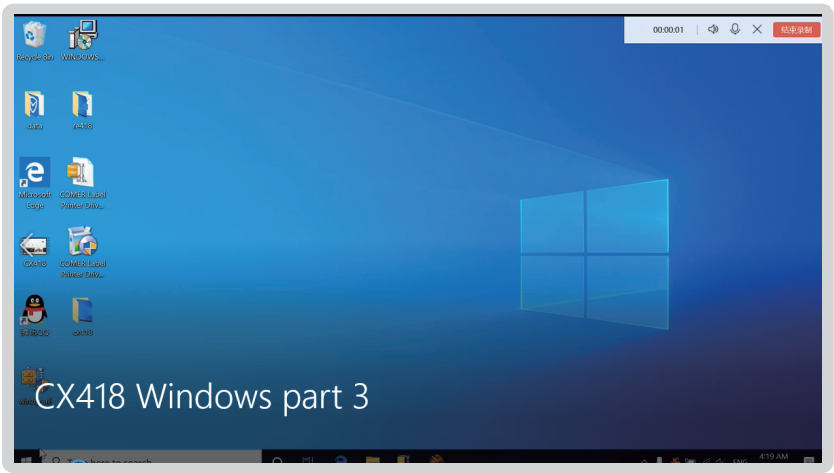
- ## 2. Find the driver and prompt to install.



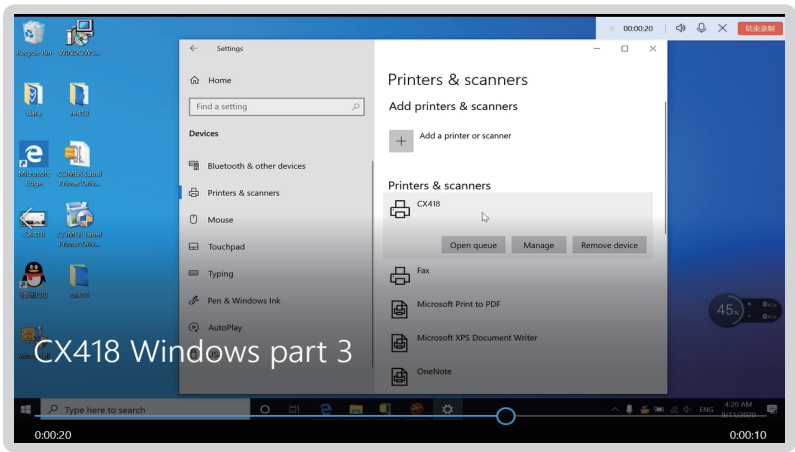
3. Installed successfully.



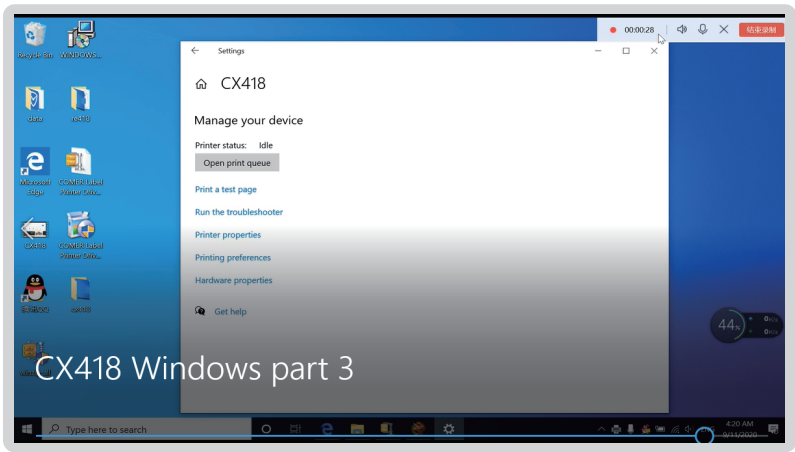
4. Connect computer to printer and place direct thermal label, start to print a test page.



5. Connect computer to printer and place direct thermal label, start to print a test
Test the printer, click on the 【 Device and Printer】 in the computer, (just as
the pic shows) to find the installed printer.



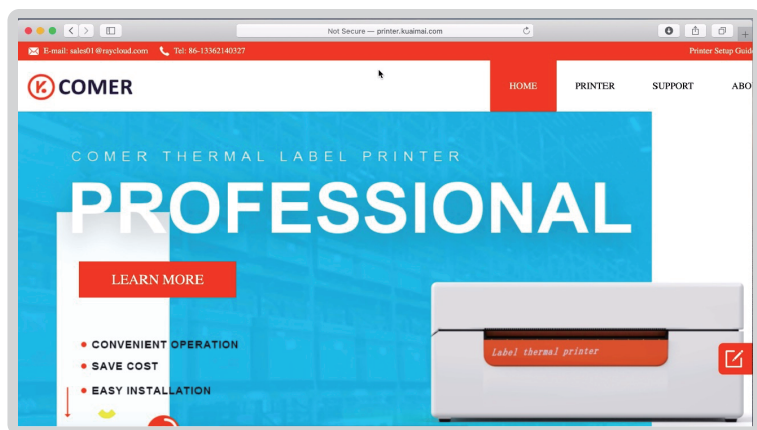
6. Check the test page, can reset the label size and print density if don't satisfy".



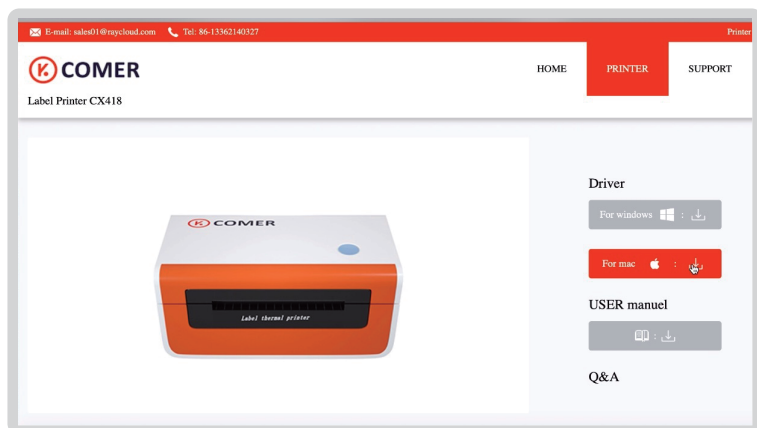


1. Pls ensure the printer ON, download the Mac driver and run the downloaded software, prompt to complete installation.

Please download driver in USB disk or website. The video takes website for example.



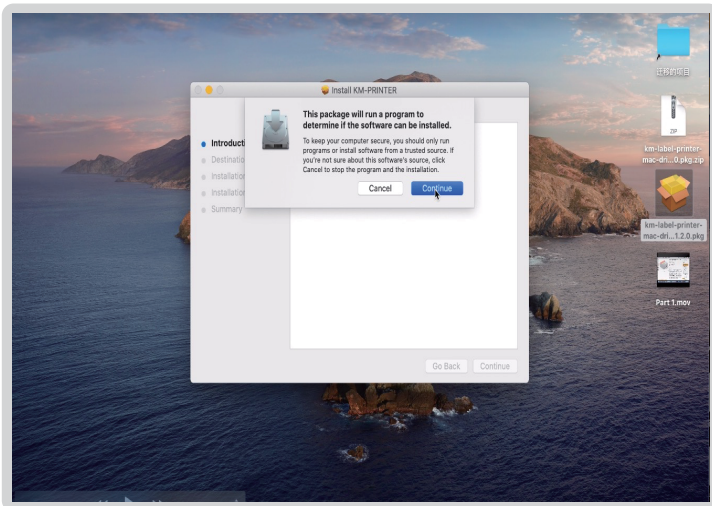
2. Find CX418 Printer and click it.



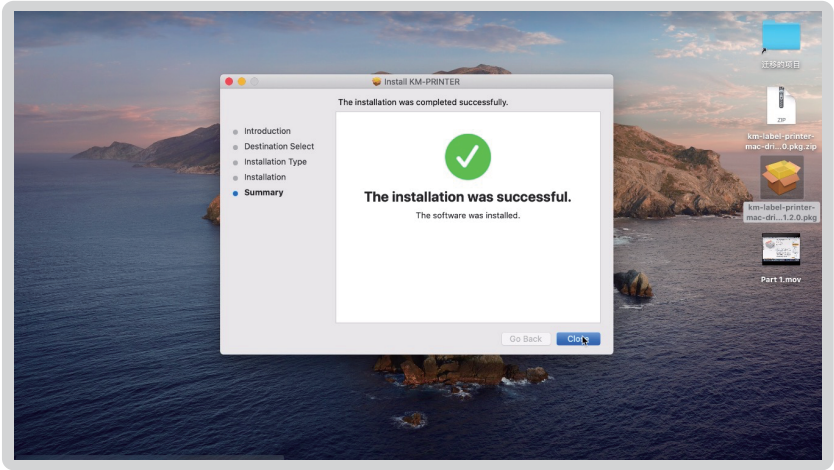
3. Download the Zip/Rar format, you need to download the unzip tool to restore.



4. Please ensure the printer ON,run the download software, prompt to complete installation.



5. Please confirm the CX418 printer already installed.



Next how to find the Installed printer in your Mac?

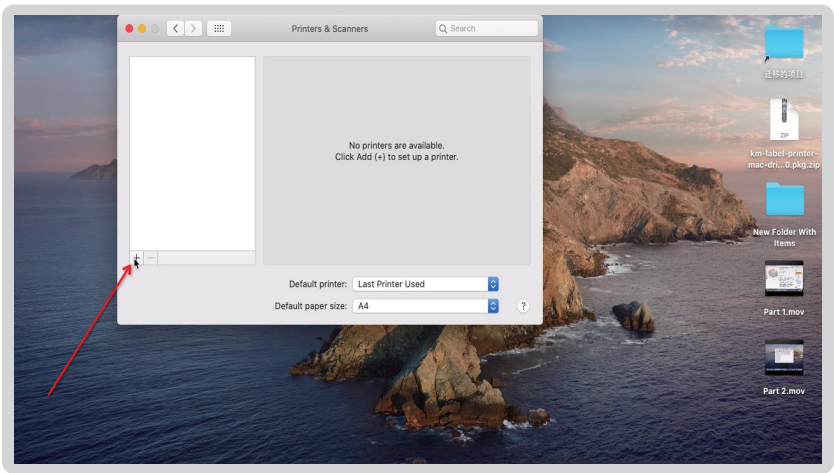
1. Pls find the installed printer driver in the launchpad of your Mac.



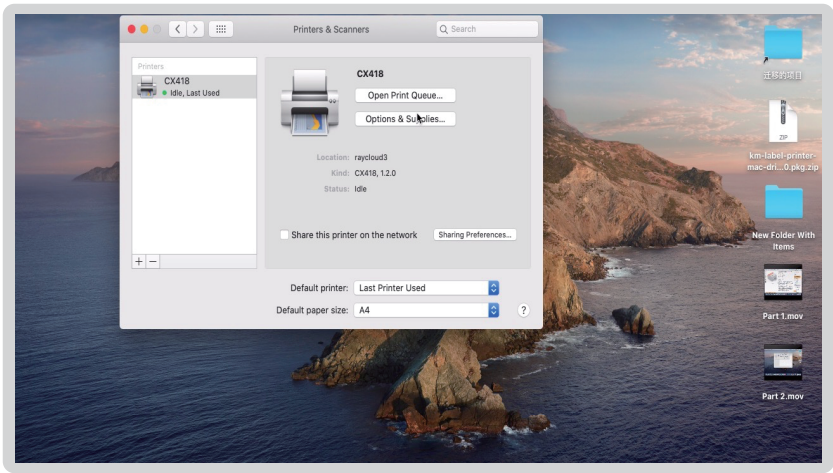
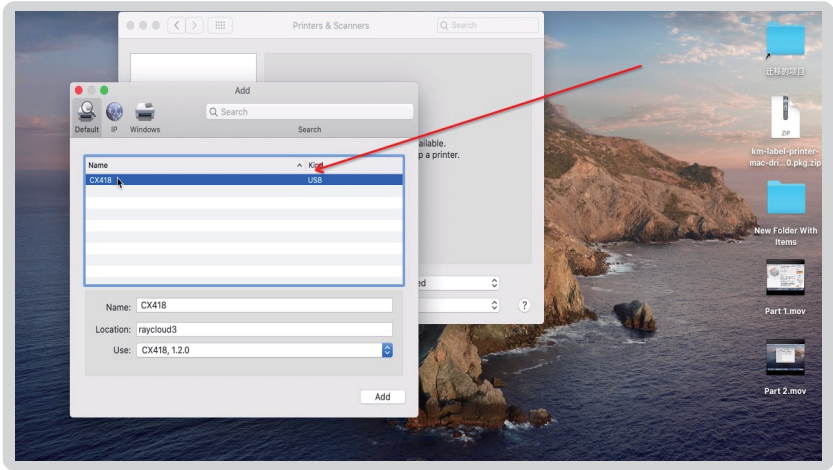
2. Pls click the system preference.



3. Select 【Printer and Scanners】 ,Add the printer drive;



4. if the page display your printer information, the installation succeeds.



Please feel free to contact us if you have any problems.

Email:sales01@maijia.com

Button'FEED'Instruction



Printer Status	Operation of FEED	Function
standby	Press	Feed in a blank paper automatically
standby	Long press the blue light flashes twice	Enter into the learn mode of cover sheet
Power on	Long press the blue light	Print out self test page
Continuous printingPrint	Press	Print pause
Print pause	Press	Resume Printing

Indicator Light Instruction



Indicator Light Status	Printer Status
Blue light on	Printer standby
Purple light on	Printer head overheated
Red light on	Upper cover problem
Red light flash slowly	Lack paper
Red light flash quickly	Label learn mode problem
Yellow light flash slowly	Paper jam/Paper detection problem
Green light on	On printing
Green light flash slowly	Print pause



The printer uses Tips

- 1、 To ensure optimal print quality, use the original factory power adapter;
- 2、 Avoid the poor quality paper which wear the printer greatly,Causing damage the heat of the printer;
- 3、 Regularly or at the print unclear,please clean the print head, to ensure high-quality print results;
- 4、 When replacing the paper specification(including the thickness of the paper, quality),suggest do "Automatic identification label";
- 5、 If the poor quality of the paper, and ensure the heating has been cleaning, If print effect could still not meet the requirment, can adjust the appropriate high concentration of printing, the range of 0 to 15 levels.
- 6、 The product have paper absorption function, please load the paper in the rear suction mode,Open cover will cause the waste of paper;



Printer Data Sheet



Brand	Comer
Method	Direct Thermal
Resolution	203 dpi
Max Printing Speed	150 mm/s
Connection	USB
Printing Width	50 -108 mm
Paper Width	50 -118 mm
Power Adapter	1.5A

The Comer thermal printer is covered by a one-year warranty.

In the unlikely event that you experience any issues with your printer, please contact Comer customer service to promptly receive troubleshooting tips or a replacement.

For any questions and/or suggestions, please email the service1@kcomer.com

Any further information please visit 【<http://www.kcomer.com>】

